

# Interoperability API

## Endpoint Support Document

<b>Title:</b>	Interoperability API Endpoints		<b>Document ID:</b>	IO105
			<b>Version #:</b>	10.0
<b>Document Type:</b>	<input type="checkbox"/> Policy <input type="checkbox"/> Procedure <input checked="" type="checkbox"/> Other support documentation	<b>Department:</b>	Enterprise Data (EDA)	<b>Effective Date:</b> November 15, 2024 <b>Status:</b> Active
<b>Scope:</b>	This document provides the details needed to access and connect to the Patient Access API, Provider Directory API and the Formulary API Endpoints.			

### POLICY

Per the United States Centers for Medicare & Medicaid Services (CMS) Interoperability (IO) and Patient Access Final Rule, data is made available via an Application Programming Interface (API) for accessing an individual's health information. Additional APIs include the Provider Directory and Formulary APIs.

### RESPONSIBILITY

All associates, contractors and business partners must comply with the requirements in this document and the supporting procedures. Compliance with the CMS IO Final Rule and related procedures will be maintained and overseen by the Interoperability Center of Excellence (IO CoE).

### PURPOSE

This document outlines all the endpoints available for connections and accessing the Patient Access API, Provider Directory API and the Formulary API. This document is intended to provide guidance to alliance partners, application developers or others seeking access to these APIs once an agreement is in place. The Provider Directory production environment, Formulary production environment, Patient Access Sandbox environment and are public, however they require registration. The Provider and Formulary testing environments require additional actions for access to the Anthem network. The Patient Access API production environment requires member consent. Once received, a token will be issued and valid for 90 days to access this data. Ongoing access will require renewed consent.

## **PATIENT ACCESS API**

The Patient Access API contains 5 years of historical medical, dental and vision claims and clinical data for an individual. The Patient Access API adheres to the following specifications:

- [US Core Implementation Guide 5.0.1](#)
- [CARIN Consumer Directed Payer Data Exchange \(CARIN IG for Blue Button\) Implementation Guide STU 2.0.0](#)
- [HL7 FHIR Release 4.0.1](#)
- [SMART Application Launch Framework Implementation Guide Release 1.0.0](#)

Documentation and technical information related to the patient API can be found [here](#).

### **Patient Access API – Sandbox Environment**

This is a public environment for FHIR functional testing containing synthetic data. It is available for Application Developers upon registration and supports the HL7® FHIR® standard with SMART® authorization

SMART® clients can be registered and maintained [here](#).

Users can self-register for sandbox accounts here:

<https://sbx.totalview.healthos.elevancehealth.com/registration/sandbox/login>

### **Patient Access API – Production Environment**

This is the live data environment for the Patient Access API endpoints. Registration is required to properly establish connections. Requests can be made by completing the Patient Access API Production Environment request form on the Developer Portal.

For accessing the Formulary information of a specific member and the supported searches along with the endpoints, please refer to the Formulary API section. The same endpoints can also be used to fetch the formulary data for all our plans and have a member choose a plan for his/her plan specific formulary.

### **FHIR Endpoints (Production Base URL)**

<b>Brand</b>	<b>Brand URL Endpoint</b>
1. Amerigroup	<a href="https://totalview.healthos.elevancehealth.com/resources/registered/Amerigroup/api/v1/fhir">https://totalview.healthos.elevancehealth.com/resources/registered/Amerigroup/api/v1/fhir</a>
2. Anthem Blue Cross	<a href="https://totalview.healthos.elevancehealth.com/resources/registered/AnthemBlueCross/api/v1/fhir">https://totalview.healthos.elevancehealth.com/resources/registered/AnthemBlueCross/api/v1/fhir</a>

3. Anthem Blue Cross Blue Shield	<a href="https://totalview.healthos.elevancehealth.com/resources/registered/AnthemBlueCrossBlueShield/api/v1/fhir">https://totalview.healthos.elevancehealth.com/resources/registered/AnthemBlueCrossBlueShield/api/v1/fhir</a>
4. Blue Medicare Advantage	<a href="https://totalview.healthos.elevancehealth.com/resources/registered/BlueMedicareAdvantage/api/v1/fhir">https://totalview.healthos.elevancehealth.com/resources/registered/BlueMedicareAdvantage/api/v1/fhir</a>
5. Clear Health Alliance	<a href="https://totalview.healthos.elevancehealth.com/resources/registered/ClearHealthAlliance/api/v1/fhir">https://totalview.healthos.elevancehealth.com/resources/registered/ClearHealthAlliance/api/v1/fhir</a>
6. Dell Children Health Plan	<a href="https://totalview.healthos.elevancehealth.com/resources/registered/DellChildrenHealthPlan/api/v1/fhir">https://totalview.healthos.elevancehealth.com/resources/registered/DellChildrenHealthPlan/api/v1/fhir</a>
7. Healthy Blue	<a href="https://totalview.healthos.elevancehealth.com/resources/registered/HealthyBlue/api/v1/fhir">https://totalview.healthos.elevancehealth.com/resources/registered/HealthyBlue/api/v1/fhir</a>
8. Healthy Blue Blue Choice	<a href="https://totalview.healthos.elevancehealth.com/resources/registered/HealthyBlueBlueChoice/api/v1/fhir">https://totalview.healthos.elevancehealth.com/resources/registered/HealthyBlueBlueChoice/api/v1/fhir</a>
9. Healthy Blue NC	<a href="https://totalview.healthos.elevancehealth.com/resources/registered/HealthyBlueNC/api/v1/fhir">https://totalview.healthos.elevancehealth.com/resources/registered/HealthyBlueNC/api/v1/fhir</a>
10. Simply HealthCare	<a href="https://totalview.healthos.elevancehealth.com/resources/registered/SimplyHealthCare/api/v1/fhir">https://totalview.healthos.elevancehealth.com/resources/registered/SimplyHealthCare/api/v1/fhir</a>
11. Summit	<a href="https://totalview.healthos.elevancehealth.com/resources/registered/Summit/api/v1/fhir">https://totalview.healthos.elevancehealth.com/resources/registered/Summit/api/v1/fhir</a>
12. Unicare	<a href="https://totalview.healthos.elevancehealth.com/resources/registered/Unicare/api/v1/fhir">https://totalview.healthos.elevancehealth.com/resources/registered/Unicare/api/v1/fhir</a>
13. Wellpoint	<a href="https://totalview.healthos.elevancehealth.com/resources/registered/Wellpoint/api/v1/fhir">https://totalview.healthos.elevancehealth.com/resources/registered/Wellpoint/api/v1/fhir</a>

## **PROVIDER DIRECTORY API**

Provider Directory API enables current or prospective members to see which providers are in-network for a given insurance plan. This service includes multiple FHIR APIs: InsurancePlan, Practitioner, PractitionerRole, Organization, and Location.

These APIs adhere to the following specifications:

- [HL7 R4 FHIR](#)
- [DaVinci PDEX Plan Net 1.1.0](#)
- [HL7 FHIR US Core IG STU 3.1.1](#) (for the US Core resources, Plan-Net Location, Plan-Net Organization, Plan-Net Practitioner)

Root URL (Production): GET[base]: [https://cmsmanapi.anthem.com/fhir/cms\\_mandate/mcd/](https://cmsmanapi.anthem.com/fhir/cms_mandate/mcd/)

### Insurance Plan Search Parameters

Parameter	Example
_id	Get [base]/InsurancePlan?_id=[id]
_lastupdated	GET [base]/InsurancePlan?_lastUpdated=[date]
name	GET [base]/InsurancePlan?name=[string]
identifier	GET [base]/InsurancePlan?identifier=[system]][code]
Plan-type	GET [base]/InsurancePlan?type=[system]][code]
Coverage area	GET [base]/InsurancePlan?coverage-area=[reference]

### Location Plan Search Parameters

Parameter	Example
_id	Get [base]/Location?_id=[id]
_lastupdated	GET [base]/Location?_lastUpdated=[date]
organization	GET [base]/Location?=[organization]
address-city	GET [base]/Location?address-city=[string]
address-postalcode	GET [base]/Location?address-postalcode=[string]
address-state	GET [base]/Location?address-state=[string]
address	GET [base]/Location?address=[string]

### Practitioner Search Parameters

Parameter	Example
_id	Get [base]/Practitioner?_id=[id]
_lastupdated	GET [base]/Practitioner?_lastUpdated=[date]
name	GET [base]/Practitioner?name=[string]
family	GET [base]/Practitioner?family=[string]
given	GET [base]/Practitioner?given=[string]

### Organization Search Parameters

Parameter	Example
_id	Get [base]/Organization?_id=[id]
_lastupdated	GET [base]/Organization?_lastUpdated=[date]
name	GET [base]/Organization?name=[string]
Type	GET [base]/Organization?type=[system]][code]
Address	GET [base]/Organization?address=[string]

### Healthcare Services Parameters

Parameter	Example
_id	Get [base]/HealthcareService?_id=[id]
_lastupdated	GET [base]/ HealthcareService?_lastUpdated=[date]
name	GET [base]/HealthcareService?name=[string]
Specialty	GET [base]/HealthcareService?specialty=[system]  [code]
service-type	GET [base]/Organization?type=[system]  [code]
service-category	GET [base]/Organization?address=[system]  [code]

### Organization Affiliation Search Parameters

Parameter	Example
_id	Get [base]/OrganizationAffiliation?_id=[id]
_lastupdated	GET [base]/OrganizationAffiliation?_lastUpdated=[date]
participating-organization	GET [base]/ OrganizationAffiliation?participating-organization =[string]
Location	GET [base]/ OrganizationAffiliation?location=[location/reference]
Service	GET [base]/ OrganizationAffiliation?service=[service/reference]
Network	GET [base]/ OrganizationAffiliation?network=[network/reference]
Specialty	GET [base]/ OrganizationAffiliation?specialty=[system]  [code]
Role	GET [base]/ OrganizationAffiliation?role=[system]  [code]

### Practitioner Role Search Parameters

Parameter	Example
_id	Get [base]/PractitionerRole?_id=[id]
_lastupdated	GET [base]/_PractitionerRole?_lastUpdated=[date]
Practitioner	GET [base]/_PractitionerRole?practitioner=[practitioner/reference]
organization	GET [base]/ PractitionerRole?organization=[organization/reference]
location	GET [base]/ PractitionerRole?location=[location/reference]
service	GET [base]/ PractitionerRole?service=[service/reference]
network	GET [base]/ PractitionerRole?network=[network/reference]
role	GET [base]/ PractitionerRole?role=[system][code]
specialty	GET [base]/ PractitionerRole?specialty=[system][code]

## **Monthly Maintenance Window**

The API will be down on the 4<sup>th</sup> week of the month from Friday 12:00am until Sunday 11:59pm. The server will be up and running from Monday 12:00am onwards.

## **FORMULARY API**

The Formulary API provides data on formularies associated with different insurance plans and the corresponding drug lists. Data on cost sharing for the drugs under a formulary and their respective tier and pharmacy type data is also available through the API. We currently have data on Medicare, Medicaid, and CHIP plans.

The API adheres to the following specifications:

- [HL7 R4 FHIR](#)
- [DaVinci Payer Data Exchange \(PDEX\) US Drug Formulary IG 2.0.0 STU2 US](#)

Root URLs:

Test URL: GET[base]: [https://cmsmanfrmlryapitest.anthem.com/fhir/cms\\_mandate/frmlry](https://cmsmanfrmlryapitest.anthem.com/fhir/cms_mandate/frmlry)

Production URL: GET[base]: [https://cmsmanfrmlryapi.anthem.com/fhir/cms\\_mandate/frmlry](https://cmsmanfrmlryapi.anthem.com/fhir/cms_mandate/frmlry)

## **Covered API Searches Covered**

### **PayerInsurancePlan & Formulary (InsurancePlan)**

Parameter	Example
_id	GET [base]/InsurancePlan?_id=[id]
_lastUpdated	GET [base]/InsurancePlan?_lastUpdated=[date]
identifier	GET [base]/InsurancePlan?identifier=[system]  [code]
status	GET [base]/InsurancePlan?status=[code]
period	GET [base]/InsurancePlan?period=[date]
type	GET [base]/InsurancePlan?type=[system]  [code]
name	GET [base]/InsurancePlan?name=[string]
coverage-type	GET [base]/InsurancePlan?coverage-type=[system]  [code]
formularycoverage	GET [base]/InsurancePlan?formulary-coverage=[reference]
coverage-area	GET [base]/InsurancePlan?coverage-area=[reference]

### InsurancePlanLocation (Location)

Parameter	Sample URL
_id	GET [base]/Location?_id=[id]
_lastUpdated	GET [base]/Location?_lastUpdated=[date]
address	GET [base]/Location?address=[string]
address-city	GET [base]/Location?address-city=[string]
address-state	GET [base]/Location?address-state=[string]
address-postalcode	GET [base]/Location?address-postalcode=[string]

### FormularyItem (Basic)

Parameter	Sample URL
_id	GET [base]/Basic?_id=[id]
_lastUpdated	GET [base]/Basic?_lastUpdated=[date]
code	GET [base]/Basic?code=formulary-item
subject	GET [base]/Basic?subject=[reference]
status	GET [base]/Basic?status=[code]
period	GET [base]/Basic?period=[date]
formulary	GET [base]/Basic?formulary=[reference]
pharmacy-benefit-type	GET [base]/Basic?pharmacy-benefit-type=[system]  [code]
drug-tier	GET [base]/Basic?drug-tier=[system]  [code]

### FormularyDrug (MedicationKnowledge)

Parameter	Sample URL
_id	GET [base]/MedicationKnowledge?_id=[id]
_lastUpdated	GET [base]/MedicationKnowledge?_lastUpdated=[date]
status	GET [base]/MedicationKnowledge?status=[code]
code	GET [base]/MedicationKnowledge?code=[system]  [code]
drug-name	GET [base]/MedicationKnowledge?drug-name=[string]
doseform	GET [base]/MedicationKnowledge?doseform=[system code]

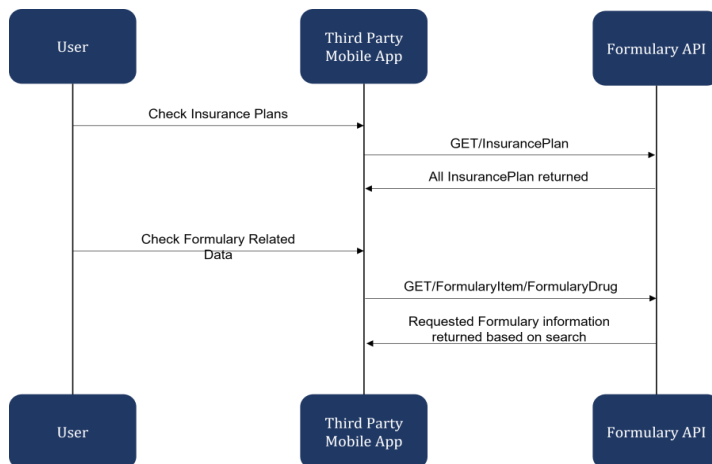
## Anticipated Client Queries

Search	Example
Find All PayerInsurancePlans	GET [base]/InsurancePlan?type=http://hl7.org/fhir/us/davinci-pdex-plannet/CodeSystem/InsuranceProductTypeCS
Find All Insurance Plans with Drug Coverage	GET [base]/InsurancePlan?coverage-type=http://terminology.hl7.org/CodeSystem/v3-ActCode DRUGPOL
Find All Formulary Resource	GET [base]/InsurancePlan?type=http://terminology.hl7.org/CodeSystem/v3ActCode DRUGPOL
Find a Formulary by its Identifier	GET [base]/InsurancePlan?type=http://terminology.hl7.org/CodeSystem/v3ActCode DRUGPOL&identifier=D1002
Find All PayerInsurancePlans by a Formulary	GET [base]/InsurancePlan?formularycoverage=InsurancePlan/FormularyD1002
Find All PayerInsurancePlans by Coverage Area	GET [base]/InsurancePlan?coverage-area=Location/StateOfCTLocation

### Access Models

**Standalone Formulary API access** – Does not require any authentication and users can view information on different plans and their related formularies.

### Standalone Formulary API access





For retrieving the Plan and Formulary information of a specific member, the third-party app can implement one of the two options:

#### **Option 1 – Filtered search**

By filtering Insurance Plans by Plan Type (Medicare/Medicaid) and Location (State), the member will be able to narrow down the list of plans and then check for the Plan Name in the sorted list.

#### **Option 2 – Search by Plan ID**

This case is possible only when the third-party app is connected to the Patient Access API. The app can retrieve the PlanID of member from the coverage resource (*coverage.class:plan.value*). This Plan ID can be used to query the Formulary API in [code] using the following endpoint - GET [base]/InsurancePlan?identifier=[system]|[code]

### **PAYER TO PAYER DATA EXCHANGE**

The payer-to-payer solution has been decommissioned as we are working towards the new CMS guidelines on payer to Payer API.